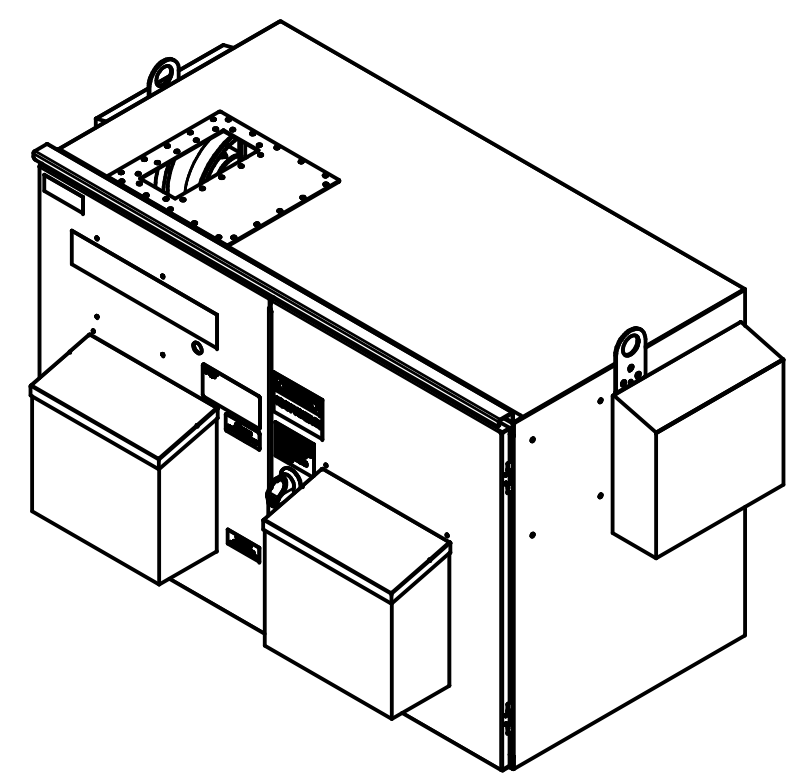
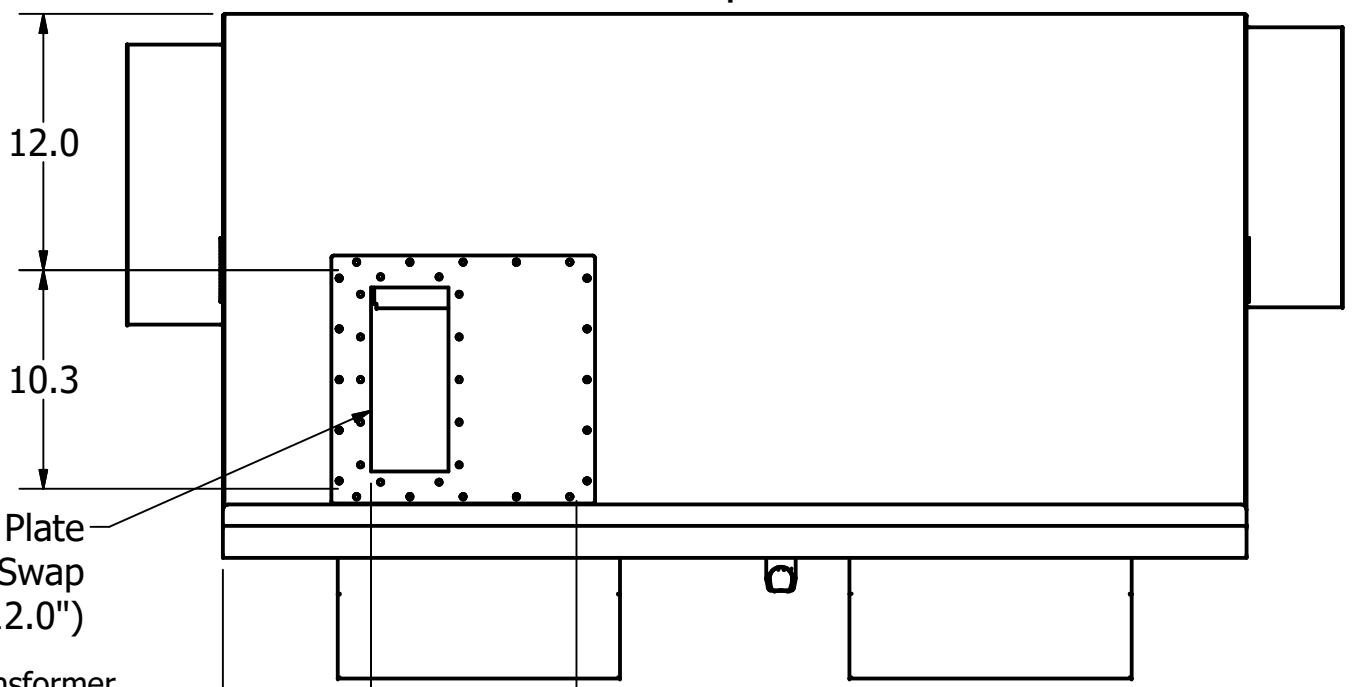


UNIT SPECIFICATIONS						
kW	VOLT	PHASE	HZ	HARMONIC	KVAR	AMPS
250	380-415	3	50	5TH	51	470

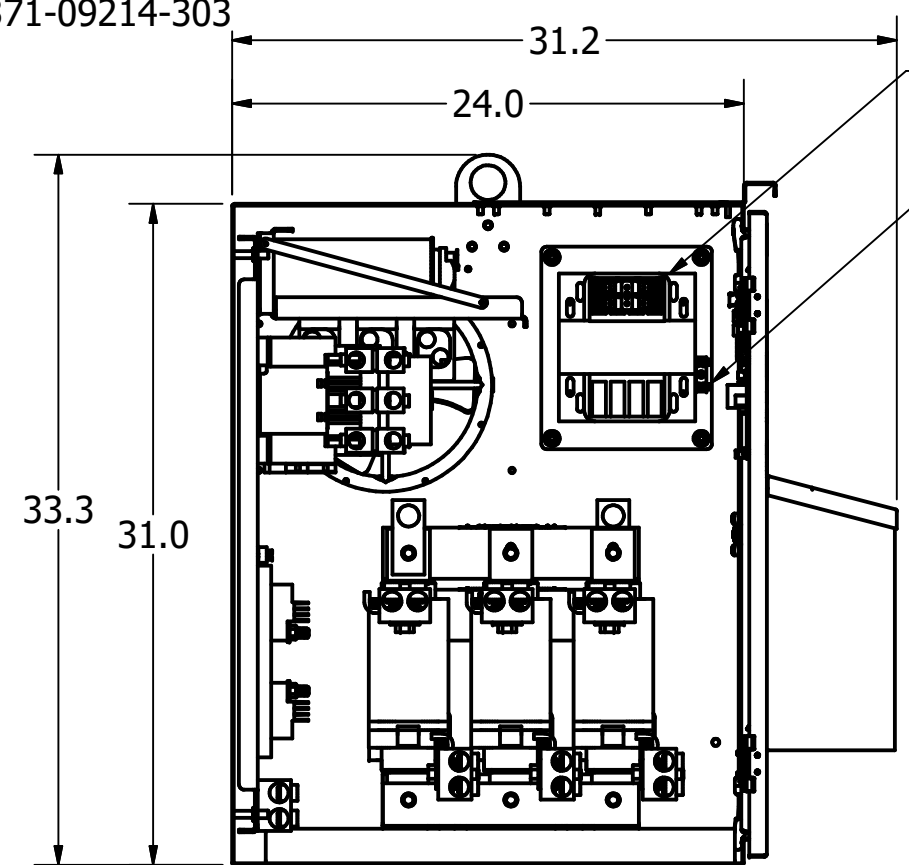
SCHEMATIC : 31653 Top View



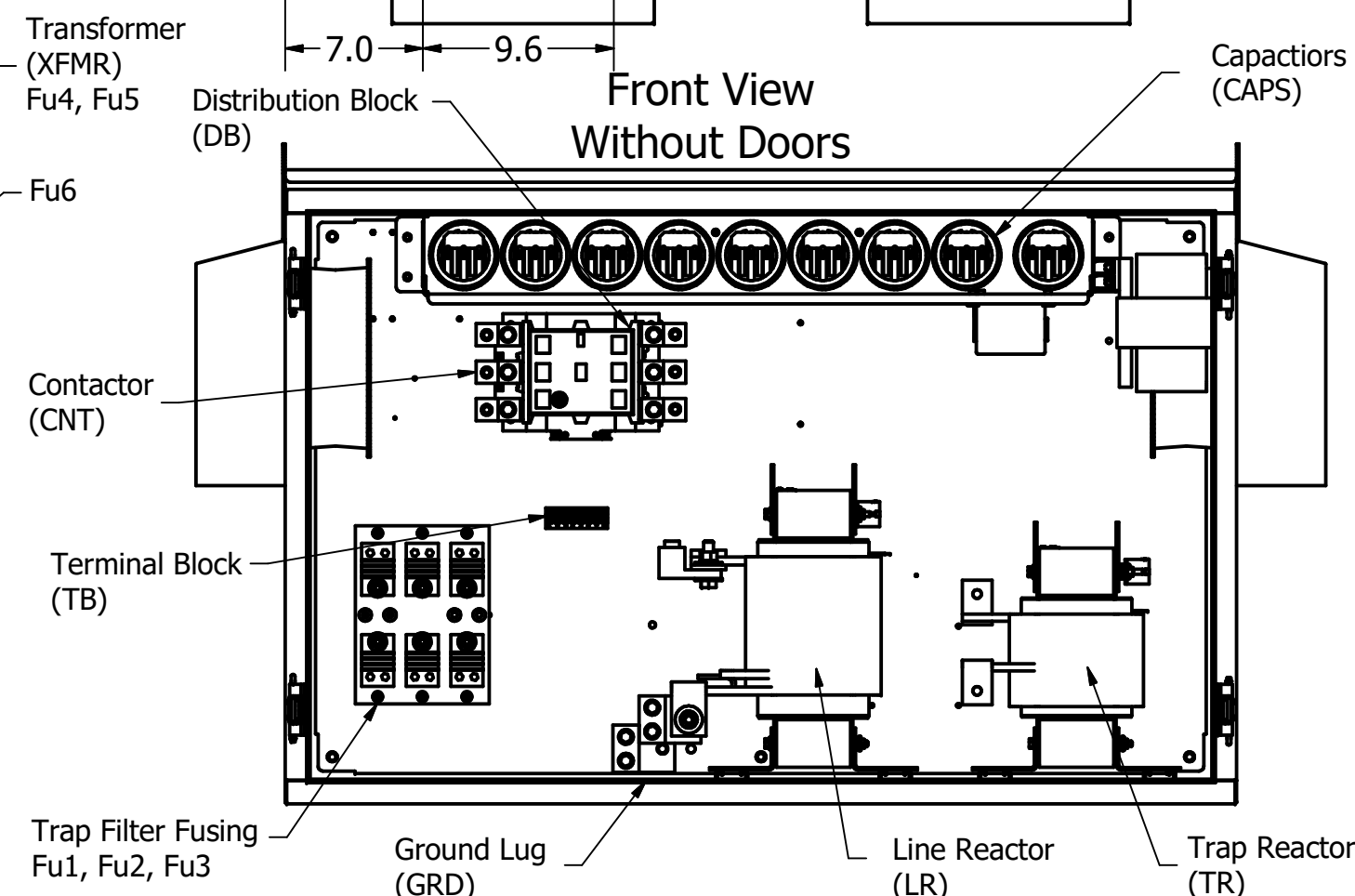
**GROUND LUG:**  
WIRE RANGE - TWO 600MCM-2  
TIGHTENING TORQUE 500 IN-LB.

**CUSTOMER CONNECTIONS:**  
WIRE RANGE - TWO 600MCM-2  
TIGHTENING TORQUE 500 IN-LB.

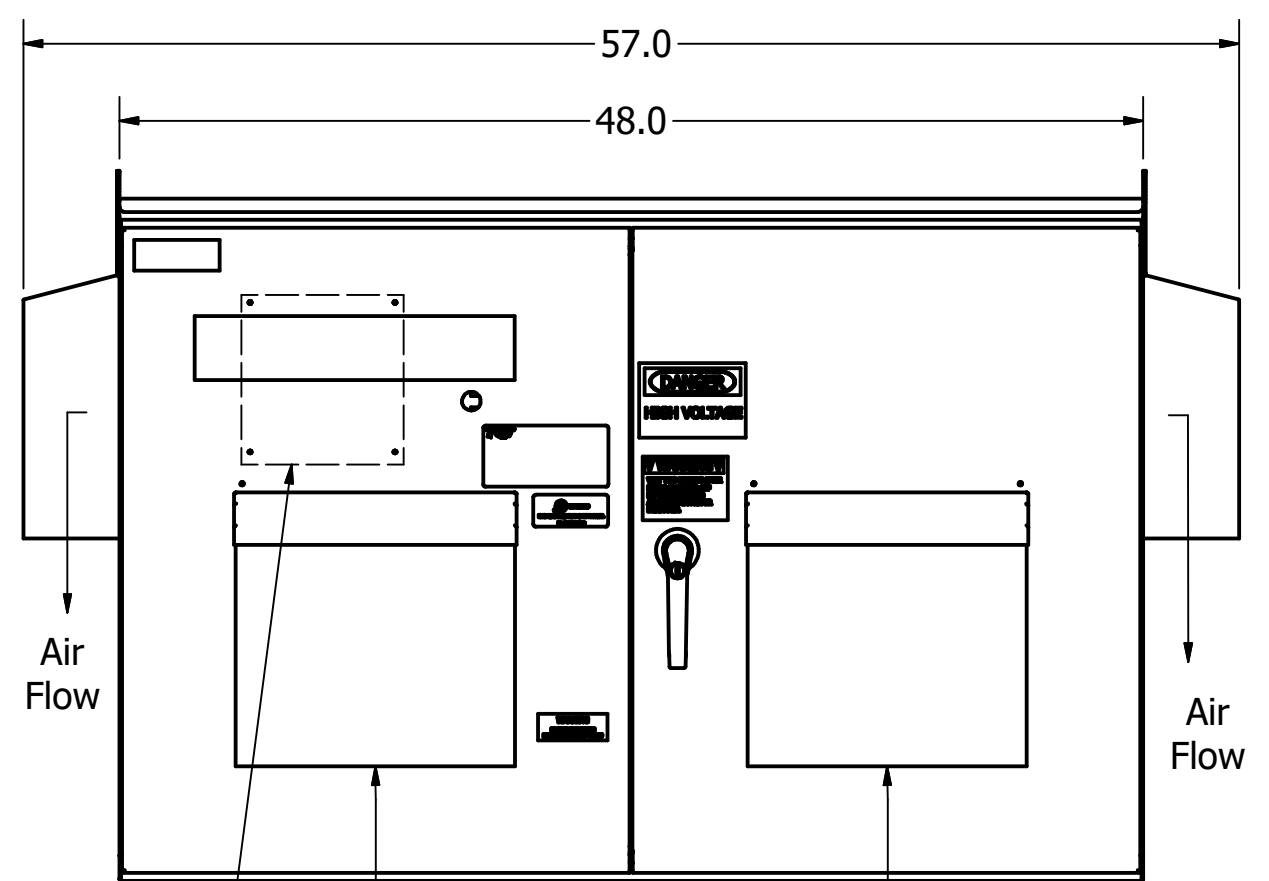
- Notes:**
1. Customer is responsible for installation to meet all national and local electrical codes.
  2. Use only hubs or fittings that comply with UL514B for type 3R enclosures.
  3. Approx. WT LBS : 850
  4. Enclosure Color: RAL 7006 Beige Grey.
  5. Filter Configured With Dry Capacitors.
  6. JCI P/N: 371-09214-303



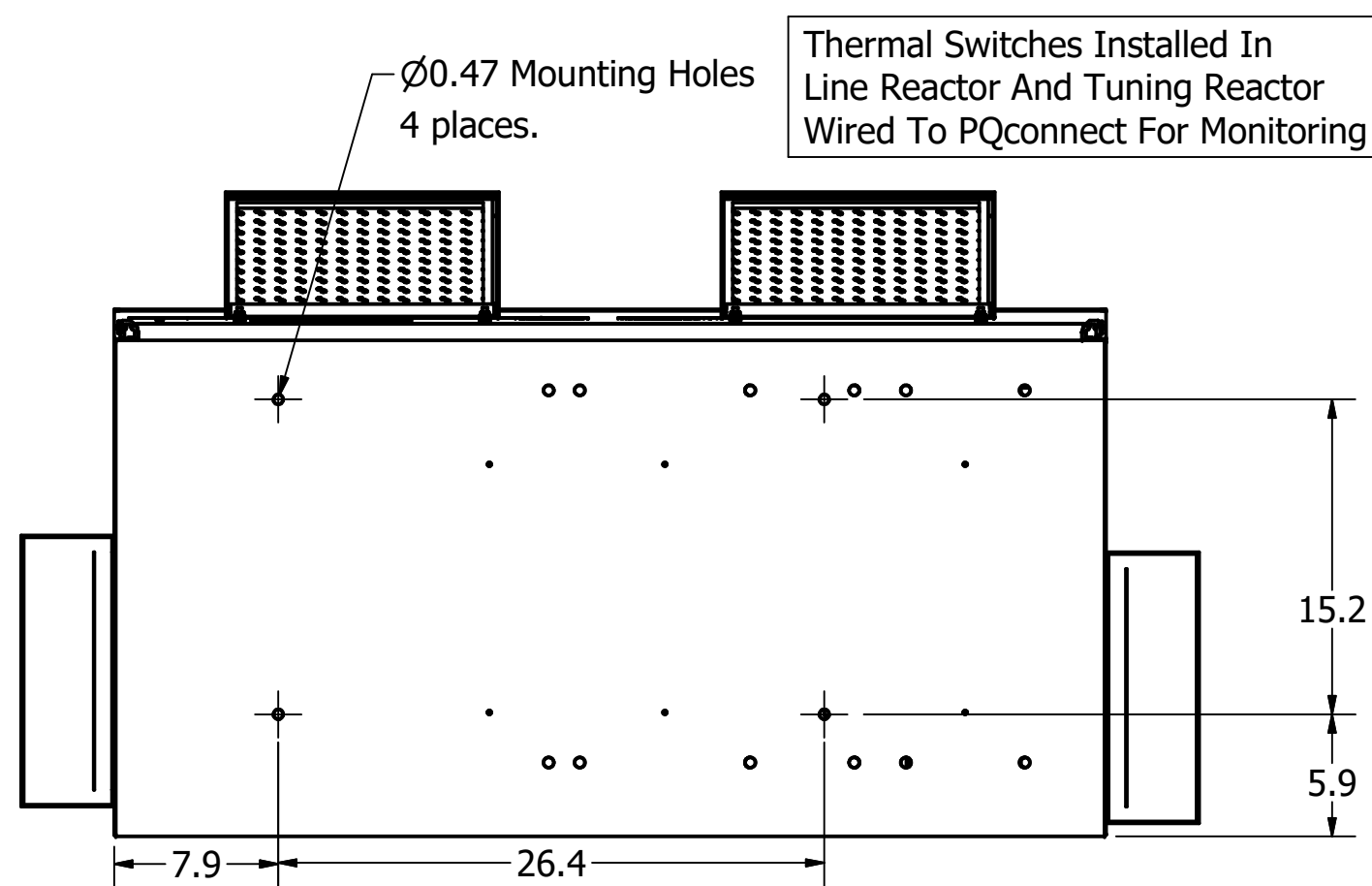
Side View Without Wall



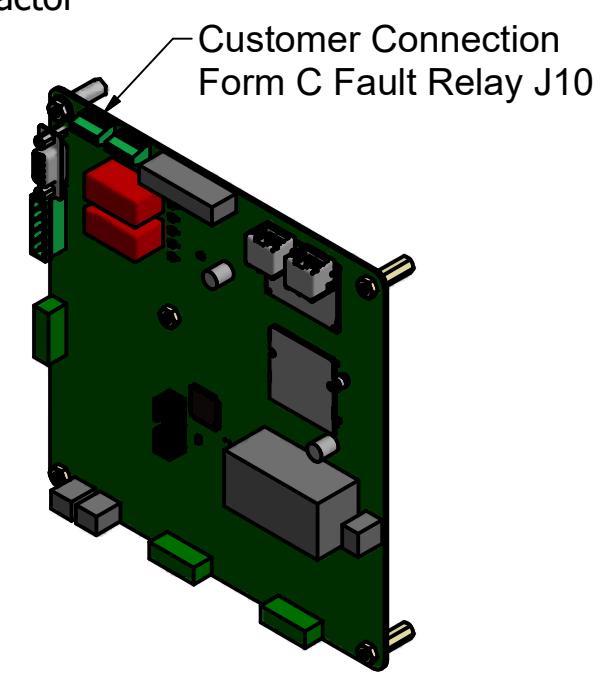
Front View Without Doors



Front View



Bottom View



THE INFORMATION AND DESIGNS CONTAINED IN THIS DRAWING ARE CONFIDENTIAL AND THE PROPRIETARY PROPERTY OF ALLIED MOTION TECHNOLOGIES INC. AND ITS SUBSIDIARIES. NEITHER THIS DESIGN NOR ANY INFORMATION CONTAINED IN THIS DRAWING MAY BE REPRODUCED OR DISCLOSED TO OTHERS WITHOUT THE EXPRESS WRITTEN CONSENT OF ALLIED MOTION TECHNOLOGIES INC. AND ITS SUBSIDIARIES.				TOLERANCES (EXCEPT AS NOTED) DECIMAL .XX ± .25 .XXX ± .10				W132N10611 Grant Drive Germantown, WI 53022 © 2021 TCI, LLC	
B Updated Hoods				05/04/21	JRN	FRACTIONAL ± 1/32		250kW, 380-415/3/50, Type 3R, JCI, PQconnect	
A As Designed				08/06/19	JRN	ANGULAR ± 1°		DRN BY: JRN DATE: 08/06/19 108203DG	
NO REVISION				DATE	BY	SCALE: 1/9		APRVD: SIZE C SHT.1 OF 1	